

NORTHERN SIERRA AIR QUALITY MANAGEMENT DISTRICT

www.myairdistrict.com

Program Coordinator: 530-832-0102



GREATER PORTOLA WOOD STOVE CHANGE-OUT PROGRAM

CRITERIA FOR PARTICIPATION IN THE GREATER PORTOLA WOOD STOVE CHANGE-OUT PROGRAM

(see map on the next page)

ELIGIBILITY CRITERIA FOR ALL PARTICIPANTS (eligibility criteria was updated January 2018):

- Must have a currently installed and operating wood heating device:
 - A non-EPA certified wood stove (typically manufactured/installed prior to 1992); OR
 - An EPA certified wood stove manufactured 20+ years ago with the emission control technology in disrepair*; OR
 - An EPA certified wood stove manufactured 20+ years ago, in any condition, to be replaced with a pellet, propane or kerosene heating device; OR
 - An open fireplace being used as a primary heating device.
- Must submit a completed application to be considered for the program. Applications will be disqualified:
 - IF the old device is removed from the home prior to application approval.
 - IF the new certified, device is purchased before application approval.
 - IF any information on the application is false or incomplete.
- Installation must be completed by a District-Approved Retailer.

**An EPA certified wood stove that is 20+ years old may be repaired when the emission control technology is not functioning properly. If not repairable at a reasonable rate, it will be replaced with a new EPA certified device. This program does not cover general maintenance repairs including, but not limited to, cracked glass doors, cracked brick, worn gaskets, clogged chimney pipe/cap and chimney sweeping/cleaning.*

ZONE 1 CRITERIA:

- Must reside within the City of Portola Sphere of Influence.

MAXIMUM FUNDING:

- Up to \$3,500 to replace a qualified wood heating device with an EPA certified wood burning device.
- Up to \$4,500 to replace a qualified wood heating device with a pellet, propane or kerosene heating device.

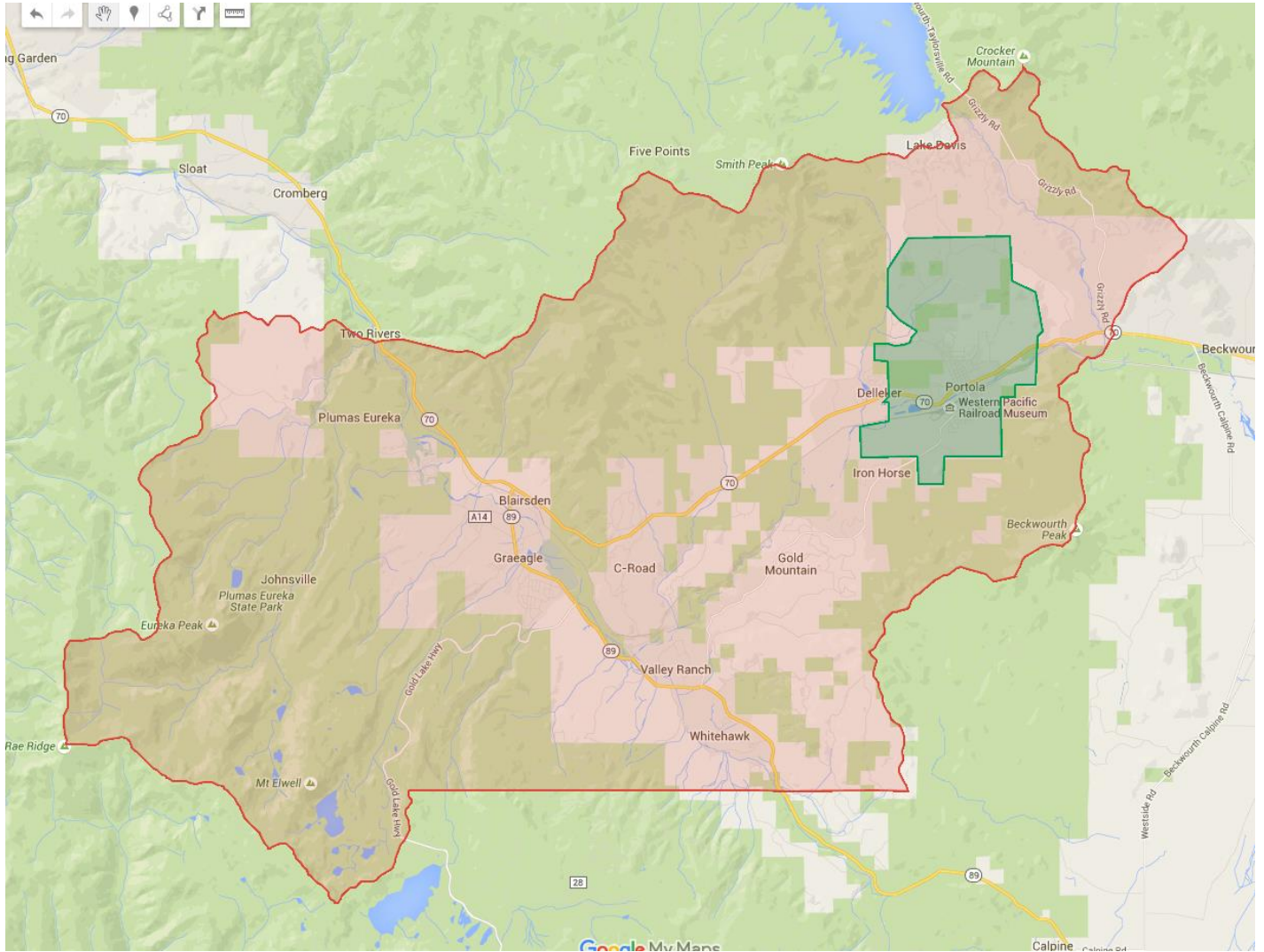
ZONE 2 CRITERIA:

- Must reside within the Greater Portola PM2.5 Non-Attainment Area (and outside the City of Portola Sphere of Influence).
- Low-Income residents, providing proof of income, will qualify for greater funding.

MAXIMUM FUNDING:

- Up to \$1,500 to replace a qualified wood heating device with an EPA certified wood burning device.
- Up to \$3,000 to replace a qualified wood heating device with a pellet, propane or kerosene heating device.
- Up to \$3,500 for low income residents to replace a qualified wood heating device with an EPA certified wood burning device.
- Up to \$4,500 for low income residents to replace a qualified wood heating device with a pellet, propane or kerosene heating device.

MAP of the Greater Portola PM2.5 Non-Attainment Area (with the City of Portola Sphere of Influence in green)



NON-ATTAINMENT AREA INCLUDES COMMUNITIES OF IRON HORSE, DELLEKER, C ROAD, MOHAWK VISTA, PLUMAS-EUREKA, BLAIRSDEN-GRAEAGLE, GOLD MOUNTAIN, WHITEHAWK, CLIO, JOHNSVILLE, AND PORTIONS OF LAKE DAVIS.

(Go to www.myairdistrict.com to explore the map in greater detail)