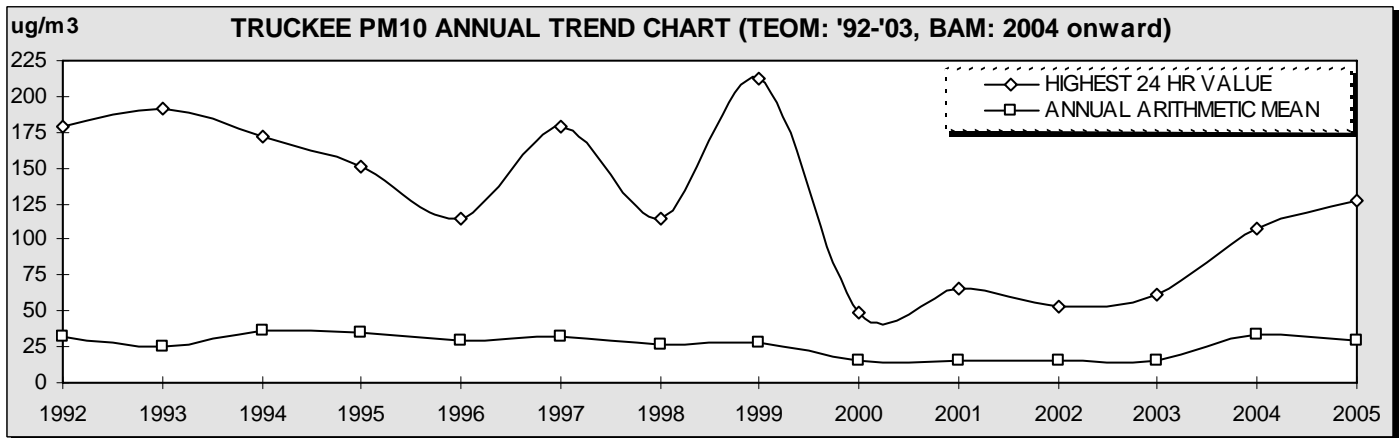


PM10 CONTINUOUS DATA

Table 13 Truckee Fire Station

| | ANNUAL Arithmetic MEAN | HIGHEST 24 HOUR CONCENTRATION | HIGHEST 1 HOUR CONCENTRATIO N | DAYS EXCEEDING CAAQS | DAYS EXCEEDING NAAQS |
|--|------------------------|-------------------------------|-------------------------------|----------------------|----------------------|
| 1992 | 31.7 | 179 | 1,017 | 57 | 2 |
| 1993 | 25.4 | 192 | 1,013 | 48 | 3 |
| 1994 | 36.7 | 172 | 951 | 87 | 1 |
| 1995 | 34.9 | 151 | 552 | 77 | 1 |
| 1996 | 28.8 | 115 | 331 | 46 | 0 |
| 1997 | 31.8 | 179 | 585 | 67 | 2 |
| 1998 | 26.0 | 114 | 341 | 52 | 0 |
| 1999 | 27.3 | 212 | 933 | 43 | 1 |
| 2000 | 15.2 | 49 | 214 | 0 | 0 |
| 2001 | 14.8 | 66 | 233 | 1 | 0 |
| 2002 | 15.3 | 53 | 278 | 5 | 0 |
| 2003 ¹ | 14.7 | 62 | 187 | 4 | 0 |
| <i>TEOM was replaced with a BAM in September of 2003. All data henceforth is BAM data.</i> | | | | | |
| 2004 | 33.1 | 107 | 427 | 48 | 0 |
| 2005 | 30.0 | 127 | 369 | 32 | 0 |

¹ - Data collected January through July, sampler replaced with a Beta Attenuation Monitor in September.



AMBIENT AIR QUALITY STANDARDS FOR PM10:

NATIONAL: 24 Hour Average: 150 µg/m3
Annual Arithmetic Mean: 50 µg/m3

CALIFORNIA: 24 Hour Average: 50 µg/m3
Annual Arithmetic Mean: 20 µg/m3