

# PM10 CONTINUOUS DATA

Table 14

## Quincy

	ANNUAL Arithmetic MEAN	HIGHEST 24 HOUR CONCENTRATION	HIGHEST 1 HOUR CONCENTRATION	DAYS EXCEEDING CAAQS	DAYS EXCEEDING NAAQS
1992 <sup>2</sup>	23.2	75	314	10	0
1993	20.3	132	946	83	0
1994	32.7	137	473	73	0
1995	20.8	143	680	7	0
1996	12.1	51	203	1	0
1997	12.0	44	155	0	0
1998	10.4	38	138	0	0
1999	14.1 / 12.7 <sup>1</sup>	207 <sup>3</sup> / 88 <sup>1</sup>	591 / 241 <sup>1</sup>	19 / 5 <sup>1</sup>	1 / 0 <sup>1</sup>
2000	10.5 / 10.4 <sup>1</sup>	74 <sup>3</sup> / 50 <sup>1</sup>	129	2 / 0 <sup>1</sup>	0
2001	14.6	56	143	1	0
2002	15.5	68	143	2	0
2003 <sup>4</sup>	11.8	37.5	162	0	0
2004	N/A	N/A	N/A	N/A	N/A
2005 <sup>5</sup>	25.5	71.6	196	6	0

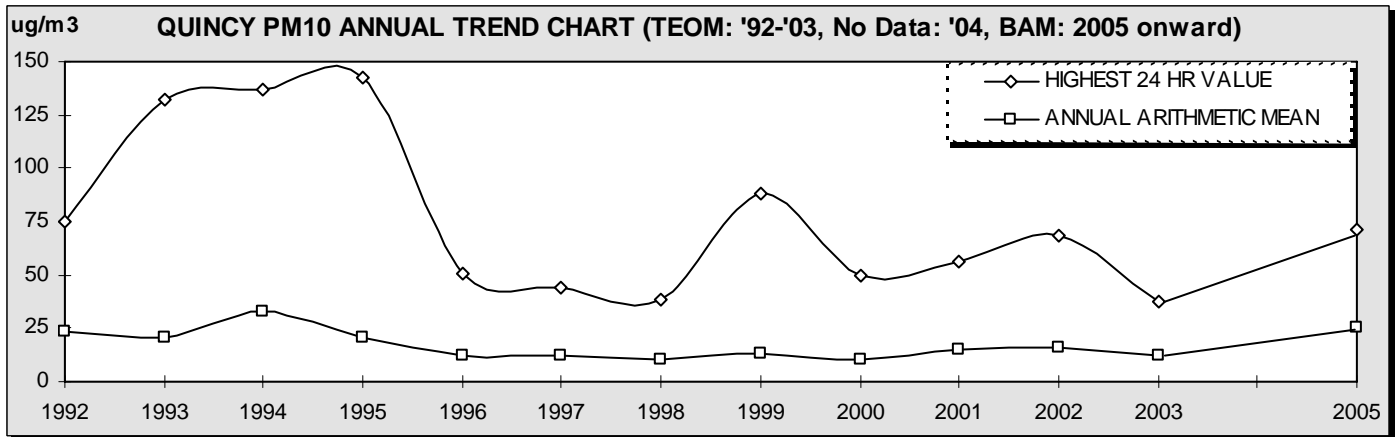
\1 - Value modified to exclude Wildfires and other Exceptional / Natural Events.

\2 - Data represents incomplete year.

\3 - High concentration due to significant smoke incursion from wildfires in No. Cal.

\4 - Data collected January through August, TEOM sampler retired due to damage from a thunderstorm in August.

\5 - First full year of collecting PM10 at this site using the MET ONE BAM1020 sampler.



### AMBIENT AIR QUALITY STANDARDS FOR PM10:

**NATIONAL:** 24 Hour Average: 150 µg/m3  
Annual Arithmetic Mean: 50 µg/m3

**CALIFORNIA:** 24 Hour Average: 50 µg/m3  
Annual Arithmetic Mean: 20 µg/m3