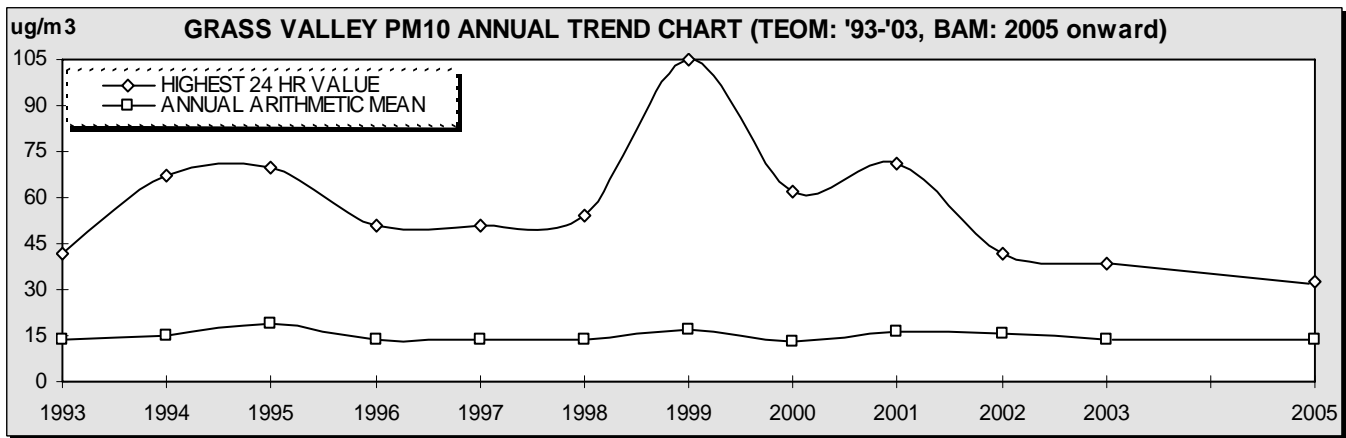


PM10 CONTINUOUS DATA

Table 12 Grass Valley - Litton Bldg.

	ANNUAL Arithmetic MEAN	HIGHEST 24 HOUR CONCENTRATION	HIGHEST 1 HOUR CONCENTRATION	DAYS EXCEEDING CAAQS	DAYS EXCEEDING NAAQS
1992	10.7	39	76	0	0
1993 ^{\2}	13.7	42	156	0	0
1994	15.3	67	187	5	0
1995	19.2	70	125	10	0
1996	13.6	51	122	1	0
1997	13.6	51	193	1	0
1998	13.4	54	134	1	0
1999	16.8 / 16.5 ^{\1}	105 ^{\3} / 46 ^{\1}	215 / 149 ^{\1}	9 / 0 ^{\1}	0
2000	13.3 / 13.2 ^{\1}	62 ^{\3} / 34 ^{\1}	151 ^{\3} / 111 ^{\1}	1 / 0 ^{\1}	0
2001	16.2 / 16.1	71 / 50	276	3 / 0	0
2002 ^{\2}	15.4	42	129	0	0
2003 ^{\4}	13.6	38	100	0	0
TEOM was replaced with a BAM in October of 2004. All data henceforth is BAM data.					
2005	13.7	32.7	89	0	0

\1 - Value modified to exclude Wildfires and other Exceptional / Natural Events.
 \2 - Data represents incomplete year.
 \3 - High concentration due to significant smoke incursion from wildfires in No. Cal.
 \4 - Data collected January through August, TEOM sampler retired due to damage from a thunderstorm in August.



AMBIENT AIR QUALITY STANDARDS FOR PM10:

NATIONAL: 24 Hour Average: 150 µg/m3
 Annual Arithmetic Mean: 50 µg/m3

CALIFORNIA: 24 Hour Average: 50 µg/m3
 Annual Arithmetic Mean: 20 µg/m3